

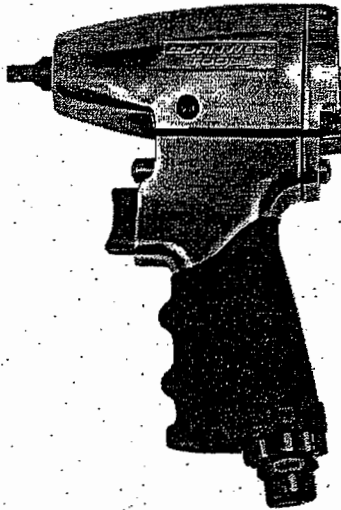
- Operating Instructions • Warning Information
- Parts Breakdown



**CAT-352HD**  
**1/4"**  
**Impact Wrench**

**SPECIFICATIONS**

	<b>CAT-352HD</b>
Max. Free Speed .....	10,000 RPM
Working Torque .....	.5-45 ft. lbs.
Maximum Torque .....	.60 ft. lbs.
Air Inlet .....	1/4" NPT
Recommended Hose Size .....	3/8"
Recommended Air Pressure .....	90 PSI
Overall Length .....	4.80"
Net Weight .....	2.09 lbs.
Mini Air Consumption .....	1.54 CFM
Square Drive .....	1/4"



**!WARNING**

-  **ALWAYS READ INSTRUCTIONS BEFORE USING POWER TOOLS**
-  **ALWAYS WEAR SAFETY GOGGLES**
-  **WEAR HEARING PROTECTION**
-  **AVOID PROLONGED EXPOSURE TO VIBRATION**

**!WARNING**

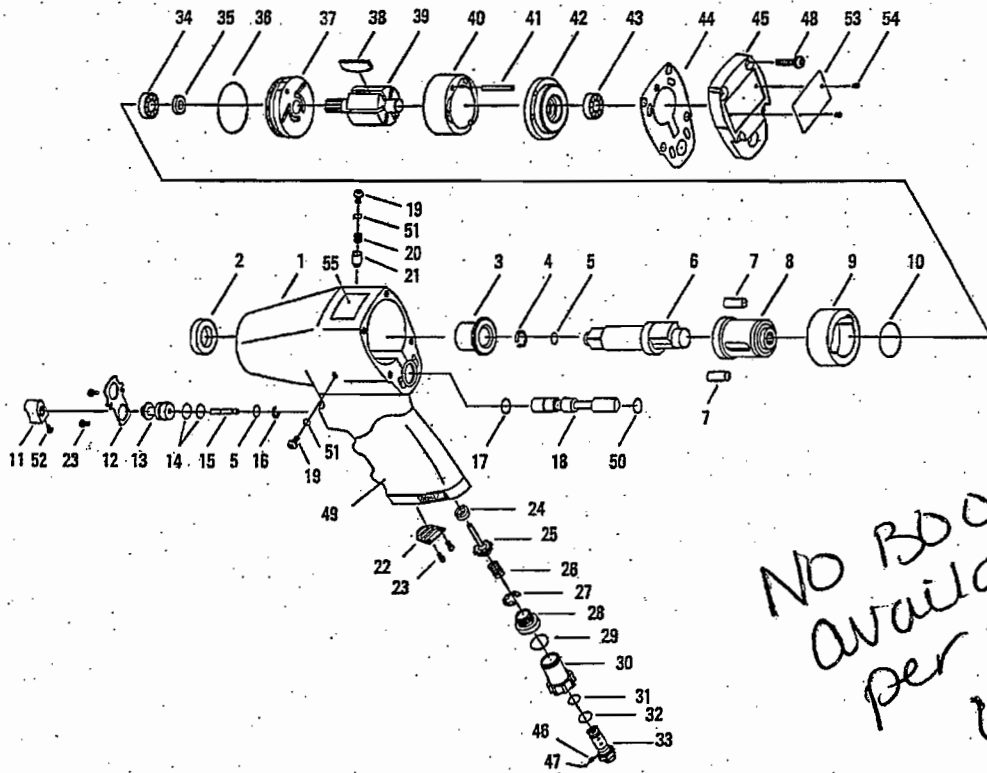
Some dust created by power sanding, sawing, grinding, drilling, and other construction activities contains chemicals known to cause cancer, birth defects or other reproductive harm. Some examples of these chemicals are:

- lead from lead-based paints,
- crystalline silica from bricks and cement and other masonry products, and
- arsenic and chromium from chemically-treated lumber.

Your risk from these exposures varies, depending on how often you do this type of work. To reduce your exposure to these chemicals: work in a well ventilated area, and work with approved safety equipment, such as those dust masks that are specially designed to filter out microscopic particles.



**CAT-352HD 1/4" Impact Wrench**



*NO BOOT  
available  
per Heather  
6/15/04*

REF. NO.	PART NO.	DESCRIPTION	QTY.
1	RS352HD01	Housing w/Valve Sleeve	1
2	RS173302	Oil Seal	1
3	RS173303	Anvil Bushing	1
4	RS173304	Anvil Collar	1
5	RS173305	O-Ring	2
6	RS173306	Anvil	1
7	RS173307	Hammer Pin	2
8	RS173308	Hammer Cage	1
9	RS173309	Hammer	1
10	RS173310	O-Ring	1
11	RS173311	Trigger	1
12	RS173312	O-Ring Stop Cover	1
13	RS173313	Valve Bushing	1
14	RS173314	O-Ring	2
15	RS173315	Valve Stem	1
16	RS173316	Snap Ring	1
17	RS173317	O-Ring	1
18	RS173318	Reverse Valve	1
19	RS173319	Screw	2
20	RS173320	Spring	1
21	RS173321	Reverse Stop Valve Pin	1
22	RS173322	Exhaust Deflector	1
23	RS173323	Screw	4
24	RS173324	Washer	1
25	RS173325	Valve Stem	1
26	RS173326	Spring	1

REF. NO.	PART NO.	DESCRIPTION	QTY.
27	RS173327	Snap Ring	1
28	RS173328	Adapter Screw	1
29	RS173329	O-Ring	1
30	RS173330	Air Regulator	1
31	RS173331	O-Ring	1
32	RS173332	O-Ring	1
33	RS173333	Air Inlet	1
34	RS72131	Bearing	1
35	RS173335	Oil Seal	1
36	RS173336	O-Ring	1
37	RS173337	Front Plate	1
38	RS173338	Rotor Blade	6
39	RS173339	Rotor	1
40	RS173340	Cylinder	1
41	RS173341	Pin	1
42	RS173342	Rear Plate	1
43	RS173343	Bearing	1
44	RS173344	Rear Gasket	1
45	RS173345	Rear Cover	1
46	RS173346	Spring	1
47	RS173347	Steel Ball	1
48	RS173348	Screw & Spring Washer	4
49	RS352HD49	Rubber Grip	1
50	RS173350	O-Ring	1
51	RS173351	O-Ring	1
52	RS173352	Screw	1

